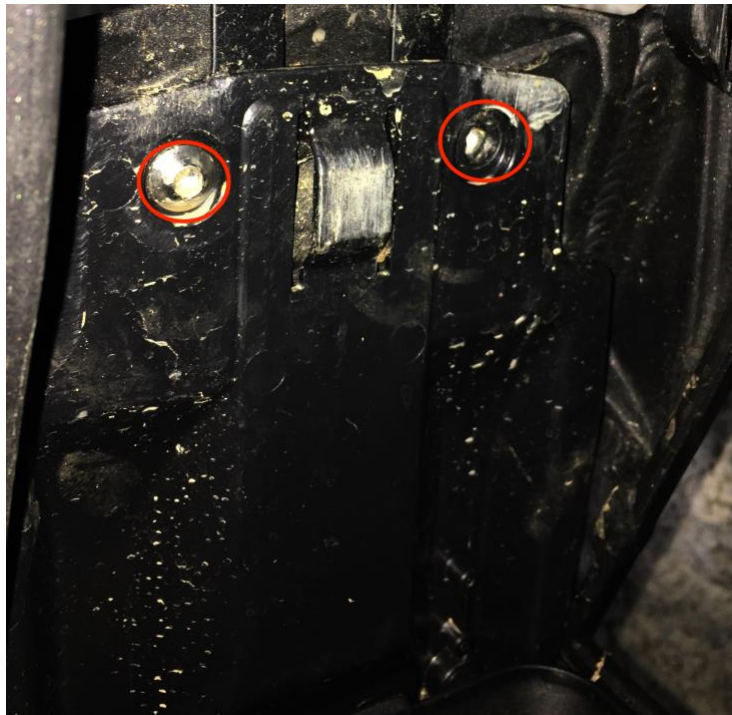


Congratulations on your purchase of the Seat Lift for SurRon! PLEASE READ THIS MANUAL CAREFULLY AND COMPLETELY BEFORE OPERATING. DO NOT ATTEMPT TO OPERATE UNTIL YOU HAVE COMPLETED PROPER ASSEMBLY. REGULAR INSPECTIONS AND CAREFUL MAINTENANCE, ALONG WITH GOOD RIDING SKILLS, WILL ENSURE THAT YOU SAFELY ENJOY THE CAPABILITIES AND THE RELIABILITY OF THIS MODIFICATION. WE DO NOT TAKE ANY RESPONSIBILITY FOR INCORRECT ASSEMBLY. ANY MODIFICATION CAN AFFECT FACTORY GUARANTEE – PLEASE CONTACT YOUR DISTRIBUTOR FOR MORE INFORMATION

Always wear a helmet. Failure to follow instructions could result in severe injury or death to the machine operator, a bystander, or a person inspecting or repairing the machine.

1. Disassembly all following bolts
  - a. 2x key mechanism support bolts (inside battery frame space)



b. 2x closing bracket bolts

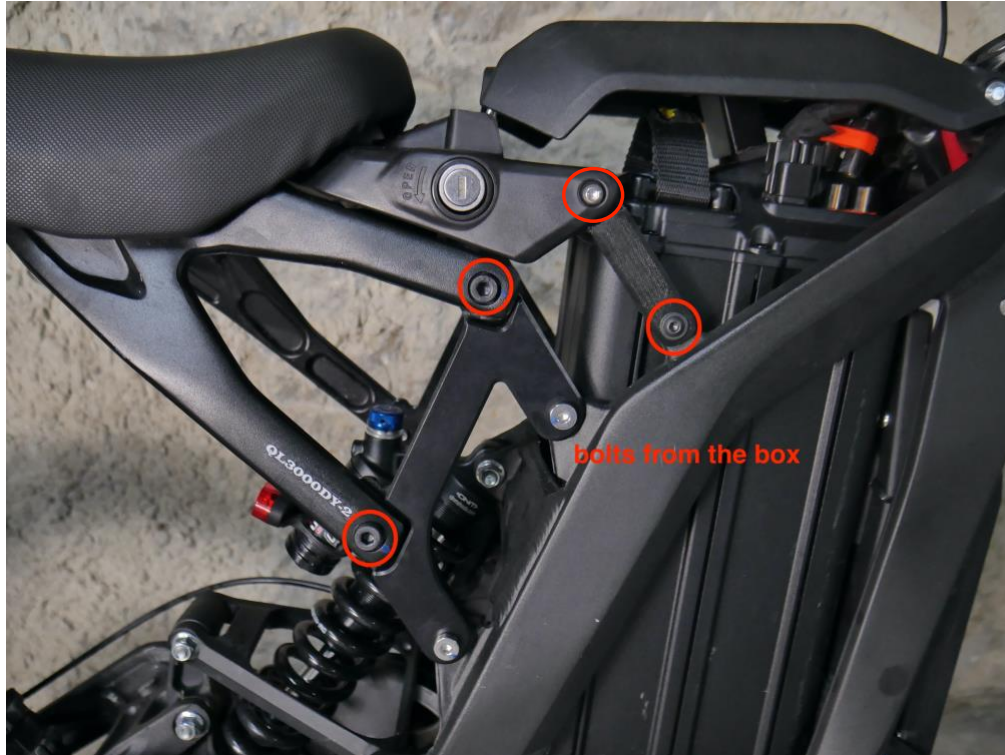


c. 6x seat support bolts

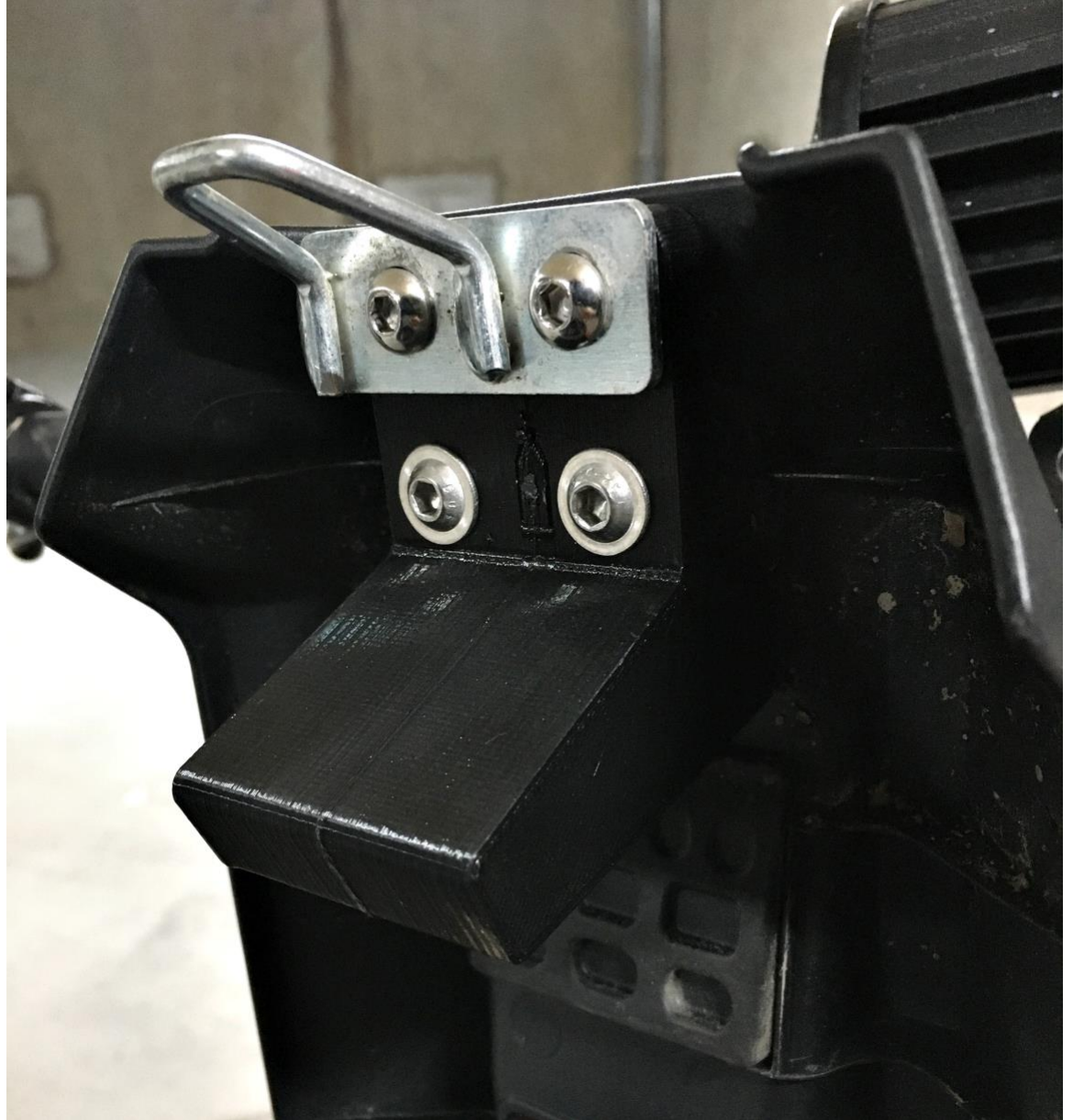


2. Screw-in bolts with provided parts:

- a. 4x M8x16 with CNC aluminium
  - i. Original SurRon bolts go on the bottom, provided at the top.
- b. 2x M6x10 with plastic key mechanism extender
  - i. Original SurRon bolts go on the top, provided on the bottom



- c. closing bracket spacer with 2x M6x20 bolts provided bolts and 2x original bolts

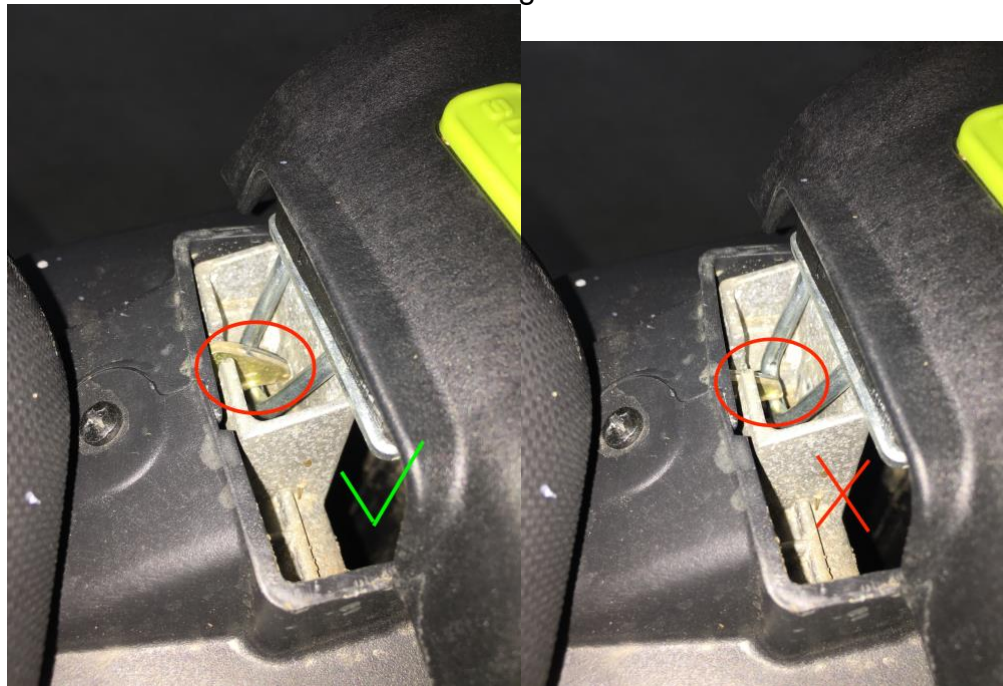


NOTE : do not tighten any bolts until all of them are on the position

NOTE: Before every ride, please make sure that the battery spacer touches battery firmly. Otherwise battery might move during ride which can cause damage.



NOTE 2: Before every ride, please make sure that the lock hinge is closed all the way in. Otherwise it might cause battery cover to open and which can lead to serious damage.



Due to slight differences in each SurRon/Seagway it is possible that you would need additional adjusts to fit the battery spacer properly:

- file/cut off some plastic material from battery cap or Battery Spacer
- add/remove pad from under battery
- add/remove pad from under Battery Spacer
- loosen up all the bolts and reposition seat

Please contact us directly on [fb.me/milkracing](https://fb.me/milkracing) if you need more support.

### 3. Operation

- a. Take the key out, keep your handlebar straight and pull battery cover all the way to the end when the battery is putting in/out the bike. This will save Battery Spacer from colliding with battery.



- b. **WARNING** - Before each ride make sure that Battery Spacer is the right place and position to keep battery in place – this is a must since the battery movement can cause undesirable damage. Battery Spacer might reposition over time. Please also check bolts every ride.



[www.Fb.me/milkracing](http://www.Fb.me/milkracing)